



For Immediate Release

This year Puerta Roja returns to Art Taipei, presenting works by an outstanding roster of Spanish and Latin American artists led by Carlos Cruz-Diez, one of the most influential artists of the 20th and 21st centuries. Carlos Cruz-Diez' works have become part of the most prominent public collections including, amongst others, the National Taiwan Museum of Fine Arts, MoMA, Tate Modern, Georges Pompidou and The Museum of Modern Art Sydney.

The booth will showcase a new series of mobile bamboo sculptures by Laurent Martin 'Lo'. His works have been well appreciated in Asia. He was invited to participate in the *Bamboo Traces* Exhibition at the National Taiwan Craft Research and Development Institute and Taiwan Design Fair at the Wu Yuan Cultural Centre of Tainan. In the Korean International Art Fair (KIAF) held in September this year, Lo's work was extremely well received, where nine works were acquired by prominent Korean collectors, including a highly regarded private museum, Koo House Museum of Art and Design.

Puerta Roja will also present the works of Miguel Chevalier, who has been selected by MOCA for a special project in conjunction with Art Taipei. As Cruz-Diez forged the way for Op-Art and Kinetic art, Chevalier is recognized as a progenitor of digital and virtual art. Along with numerous solo exhibitions in Europe, Chevalier has had prominent public installation commissions around the world. His work is held in the collections of prominent museums such as Musée d'Art Moderne de la Ville de Paris.

Alongside Cruz-Diez, Chevalier and 'Lo' will be two of Puerta Roja's rising artists, Javier León Pérez and María García-Ibáñez.

(Hong Kong, 10 October 2017) Puerta Roja is returning to Art Taipei from the 19th to 23rd of October at the Taipei World Trade Centre. In line with Puerta Roja's mission of promoting established and emerging contemporary Latin American and Spanish artists in Asia-Pacific, this exhibition will feature a selection of works by Franco-Venezuelan Op-Art master Carlos Cruz-Diez, Mexican digital pioneer Miguel Chevalier, Spain-based emerging artists Laurent Martin 'Lo', Javier León Pérez and María García Ibáñez.

The highlight of this year's participation will be the vibrant works by the internationally renowned Franco-Venezuelan artist Carlos Cruz-Diez. Dedicating his life to the rigours of research in colours, lines and perception, Cruz-Diez is one of the most influential artists of the 20th and 21st centuries. The artist is recognised as one of the founders of the Op-Art and Kinetic Art movements of the 1950s. New works from *Psychromie*, the artist's most complex and celebrated series, will be at

Puerta Roja Limited

1/F, SOHO 189 Art Lane, 189 Queen's Road West, Sheung Wan, Hong Kong

www.puerta-roja.com

+852 2803 0332



PUERTA ROJA 紅門

presented at the fair. Cruz-Diez began the series in 1959, using three-dimensional strips on a two-dimensional surface. Colours oscillate from one chromatic range to another, creating a kinetic experience in accordance to the viewers' movement around the piece. The mathematically precise vertical bands harness the phenomena of colour reflection and interference to re-create mesmerising effects seen in nature.

His work has been well appreciated in Asia Pacific since 1988 when *Physichromie Double Face* was installed in the Olympic Park in South Korea. In 1990 the National Taiwan Museum made him part of their permanent collection. In 2001 the *Spirale Virtuelle* was installed in the Korean Folk village in Suwonsi. Cruz-Diez' art is part of more than 60 major museum collections worldwide including MoMA, Tate Modern and Georges Pompidou. He has held multiple museum exhibitions, most notably the touring solo exhibition *Circumstance and Ambiguity of Colour*, across Asia in many national museums and leading galleries. The show was exhibited at Sang Sang Tok Tok Gallery in 2011 and to the great acclaim at The Jeonbuk Province Art Museum in 2012. Most recently, he also participated in *Spatial Illumination - 9 Lights in 9 rooms* at the Daelim Contemporary Art Museum. In addition, the artist executed numerous high profile public commissions and exhibitions in Australia, China, Japan, and Taiwan.

Whilst Cruz-Diez' art betrays the fallacy of our vision to create a new mode of perception, Miguel Chevalier explores how the digital world offers a new way of seeing. Since 1982, his art has been dedicated to the exploration of technology. Chevalier is known internationally as one of the pioneers of virtual and digital art. He has created dozens of projects variously incorporating video projections, virtual reality, holographic imagery and other forms. He has produced exhibitions and installations for galleries, museums and public spaces around the world. He has been awarded a number of architecturally-based commissions. Chevalier generative fractal flower series will be presented at the fair. Virtual flowers evolve with the cycle of seasons never repeating themselves. Unusual shapes, amazing colours, other artificial paradises are created.

In contrast to Chevalier's digital practice, Laurent Martin 'Lo' generates work out of an intimate and hands-on interaction with a single natural material, bamboo. Like Calder's mobiles, the sculptures follow strict mathematical laws of movement and balance. His manipulation of the bamboo plants from solid canes to thin and articulating contours, creates mobile sculptures where the artwork consists of not only the bamboo itself, but also the intangible hollow space within and the shadows and silhouettes they project. Lo's exquisite creations are well appreciated internationally as well as in the Asia Pacific region. Lo was recently invited by the National Taiwan Craft Research and Development Institute to participate in the *Bamboo Traces*

Puerta Roja Limited

1/F, SOHO 189 Art Lane, 189 Queen's Road West, Sheung Wan, Hong Kong

www.puerta-roja.com

+852 2803 0332



PUERTA ROJA 紅門

Contemporary International Bamboo Art and Craft Exhibition. This exhibition is a worldwide collaboration project, gathering artists and designers from many different countries and cultures, exploring bamboo, a traditional material in Asia, from a modern context.

In tune with Lo's mobile bamboo sculptures will be the meticulous sculptural paper works by Spanish artist [Javier León Pérez](#). In his stunning three-dimensional works, small elements of carefully cut Japanese paper overlay and interweave gracefully with each other. By repeating detailed processes, endlessly, fractal patterns emerged. Here the eyes are hypnotised by the flowing movement that entwines the macro and micro perspective together. These works have boundless interpretation, invoking associations to landscapes, tree roots or veins. In fact, this is because León Pérez' extremely personal creative process follows the same structure as the underlying order of nature, as reflected in its organic forms. This concept has many parallels with the philosophical ideas of Li (理), and is also found in Neo-Confucian Chinese Philosophy.

Another rising Spanish artist, [Maria García Ibañez](#), displays a simplicity of lines, purity and elegance that almost betrays the deep discourse and moral dilemmas that are embodied in the works of León Pérez. García Ibañez explores the hidden beauty beneath the elements, dissecting them and then reconstructing their essence and layers with a deeply feminine aesthetic.

Exhibition	Art Taipei 2017
Location	Taipei World Trade Centre Hall 1, booth J02
Exhibition Dates	SVIP Preview: Thursday 19 th October, 12pm – 9pm VIP Preview: Thursday 19 th October, 3pm – 9pm Friday 20 th October, 11am – 2pm Vernissage:

Puerta Roja Limited

1/F, SOHO 189 Art Lane, 189 Queen's Road West, Sheung Wan, Hong Kong

www.puerta-roja.com

+852 2803 0332



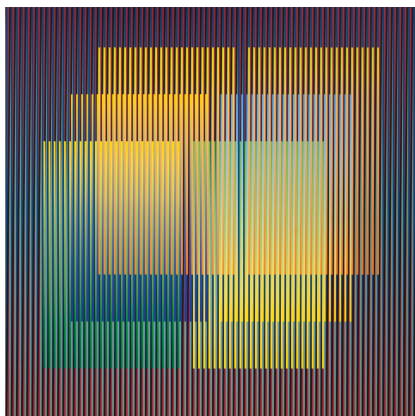
PUERTA ROJA 紅門

	Thursday 19 th October, 6.30pm – 9pm Public Opening: Friday 20 th October, 2pm – 7pm Saturday 21 th October, 11am – 7pm Sunday 22 th October, 11am-7pm Monday 23 rd October, 11am – 6pm
Media	For more information, please contact info@puerta-roja.com
Contacts	(+852) 2803 0332



PUERTA ROJA 紅門

Selected Works -



Carlos Cruz-Diez

Color Aditivo Série Caracas D1
Chromography on aluminium
80 x 80 cm, Ed. 3, Panama 2009



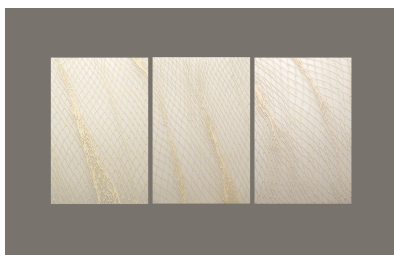
Laurent Martin "Lo"

Cosmic Sister
Weathered bamboo, steel rings
and hooks, titan braid thread,
lead and ceramic ball
150 x 120 x 120 cm
2014-2016



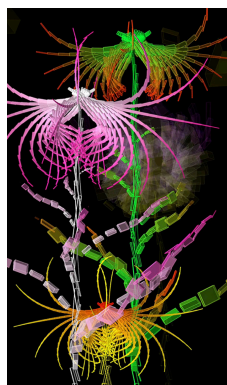
Javier León Pérez

Ayuno #5
Estratum Series
Japanese Paper on Wood in
Acrylic Box
80 x 60 x 8 cm, 2016



Maria Garía Ibañez

Redes (Nets) No. 3, Redes Series
Laser-cut Guarro Super Alfa
256gm Paper
116 x 80 cm each
116 x 243 total
2016



Miguel Chevalier

Cleome Spinoza de Buñuel
1 computer MiniMac with the
software Fractal Flowers, 55" LCD
screen, wall bracket
112 x 64 x 6.5 cm

Puerta Roja Limited

1/F, SOHO 189 Art Lane, 189 Queen's Road West, Sheung Wan, Hong Kong

www.puerta-roja.com

+852 2803 0332



PUERTA ROJA 紅門

About Puerta Roja

Founded in 2010 by Adriana Alvarez-Nichol, Puerta Roja pioneers the promotion of established and emerging contemporary Latin American and Spanish artists in Asia-Pacific.

Puerta Roja focuses on exhibitions that expand the understanding of Latin American artists' contribution to the development of global art movements, selecting artists whose discourse remains relevant to Asia Pacific. Its programming has introduced master's works from Mexican modernism to South American geometric abstraction such as Siqueiros, Carrington, Asís, Tomasello and Cruz-Diez. The gallery supports the internationalisation of emerging artists and has presented ground-breaking new media installations by Miguel Chevalier as well as works by conceptual artists such as Carlos Aguirre, Carlos Amoraes and TRES Collective. Exhibitions are regularly accompanied by a talk and community engagement programme.

Puerta Roja is firmly rooted in HK and prides itself in developing bridges that further the regional ecosystem and the local art scene. Its regional focus helps develop deep relationships with established collectors across Asia Pacific and nurture the next generation of collectors. Puerta Roja has significantly furthered its collector base by bringing top international standards to regional art fairs in Indonesia, Taiwan, Korea and Australia. It also collaborates with international collectors, galleries, and dealers representing Latin American artists and contributes to their efforts in Asia Pacific, for instance, when they participate in Art Basel HK. Puerta Roja also intermediates in the secondary market, primarily between Asian and Latin American collections.

Alvarez-Nichol is a founder and current Vice-president of the Hong Kong Art Gallery Association and represents HK at the Asia Pacific Art Gallery Alliance. Puerta Roja proudly supports Para Site Annual Auction, Neptune, the WMA Awards, the Sovereign Art Foundation and regularly contributes to other social and environmental charities.

Puerta Roja Limited

1/F, SOHO 189 Art Lane, 189 Queen's Road West, Sheung Wan, Hong Kong

www.puerta-roja.com

+852 2803 0332